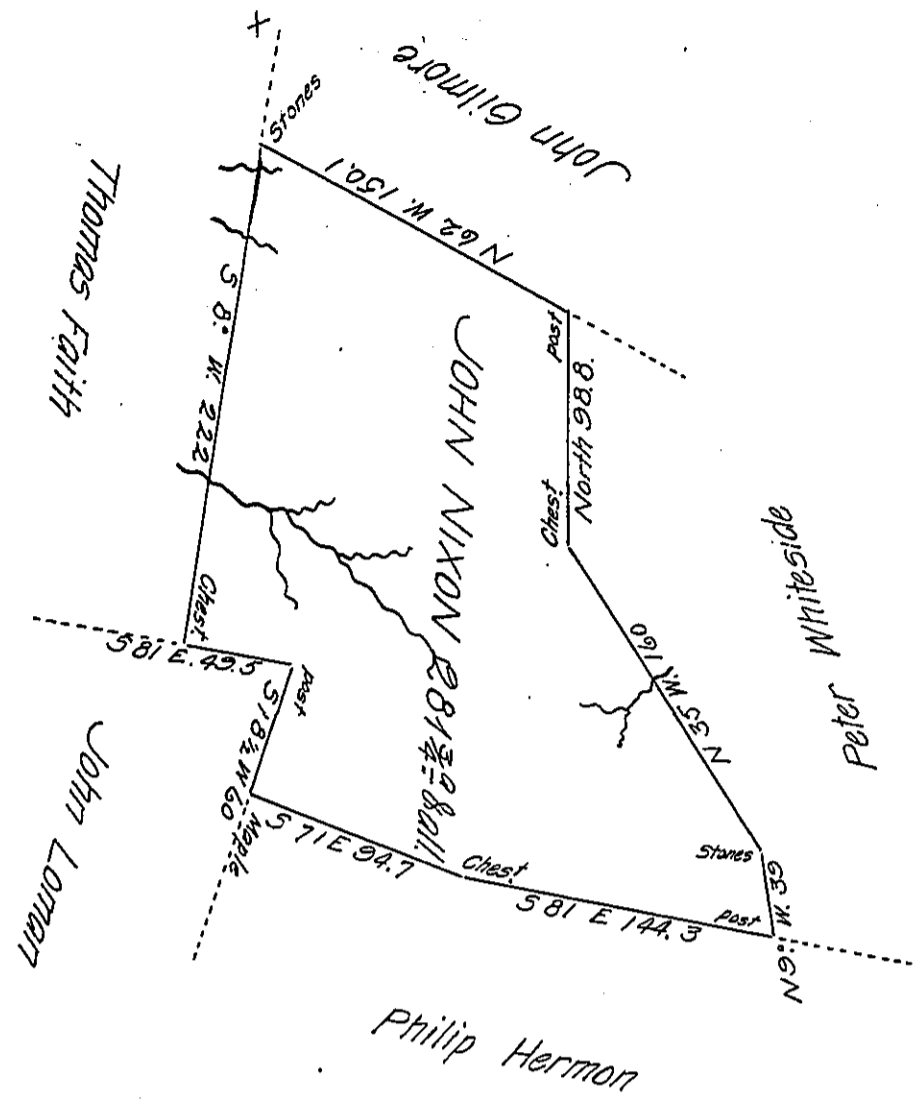


NOW Somerset County



Situate on a branch of Cox's Creek on the South side of the Glade Road in Milford Township Bedford County and Surveyed the 24th day of May 1786. In pursuance of a Warrant dated the 1st day of July 1784. And returned into the Surveyor General's Office. Caveated by James Gilmore, which has been since decided by the Honorable Board of Property in favour of said Gilmore (Viz) on the first day of October 1787. and ordered to be returned agreeable to his lines.

P^r Alexander McGlean Deputy

To Daniel Brodhead Esquire
Surveyor General

IN TESTIMONY that the above is a copy of the original remaining on file in the Department of Internal Affairs of Pennsylvania, made conformably to an Act of Assembly approved the 16th day of February, 1833, I have hereunto set my Hand and caused the Seal of said Department to be affixed at Harrisburg, this tenth day of April 1906.

Loac R Brown
Secretary of Internal Affairs.